



THE HOW TO SERIES:

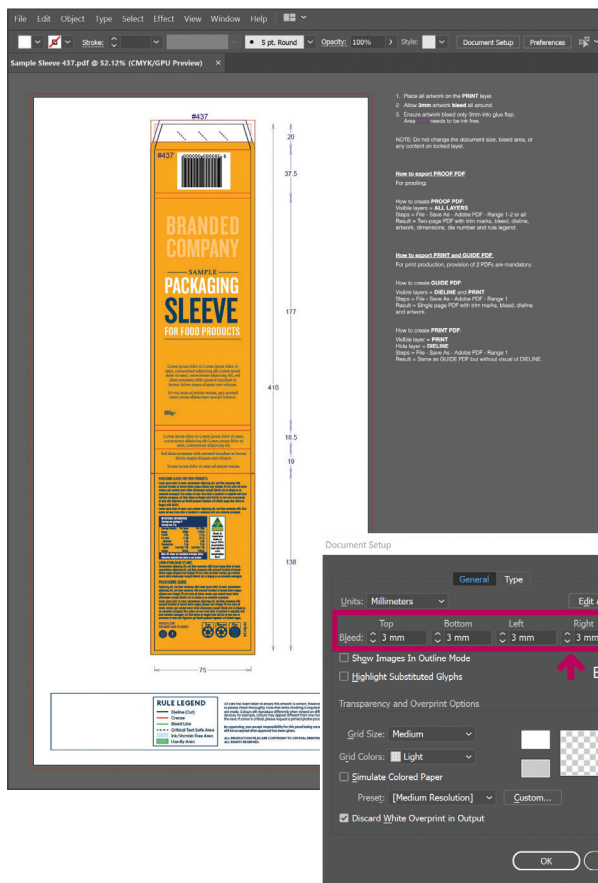
DIELINE EXPORT SETTINGS

SEPTEMBER 2020

THIS DOCUMENT COVERS THE SETUP OF EXPORT SETTINGS FROM ILLUSTRATOR TO CREATE A PRESS READY GUIDE, PRINT & DIELINE PDF FILE.

STEP ONE

When creating a new document in Illustrator, ensure that there is **3mm bleed** defined in Document Setup. Bleed artwork 5mm into the glue area as **glue flap** must be **ink free**.



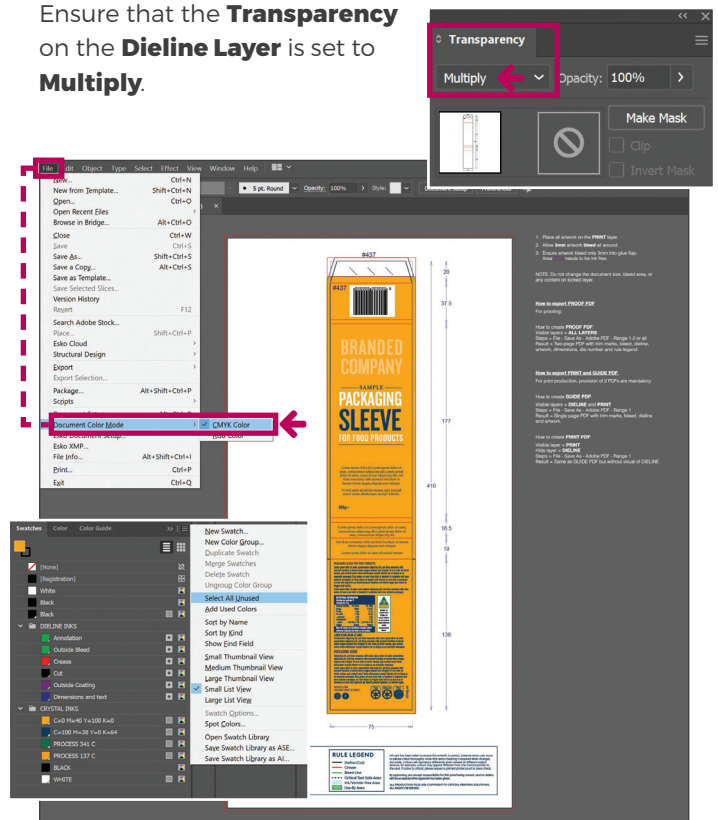
STEP TWO

When your artwork is ready to be made into a PDF, ensure that all fonts and links are available.

Check that document colour mode is **CMYK Colour**.

Remove any unused colour swatches. Check spot colours if required on artwork.

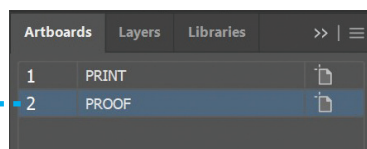
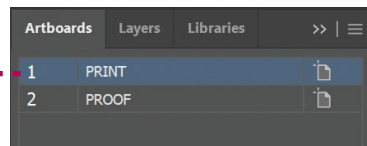
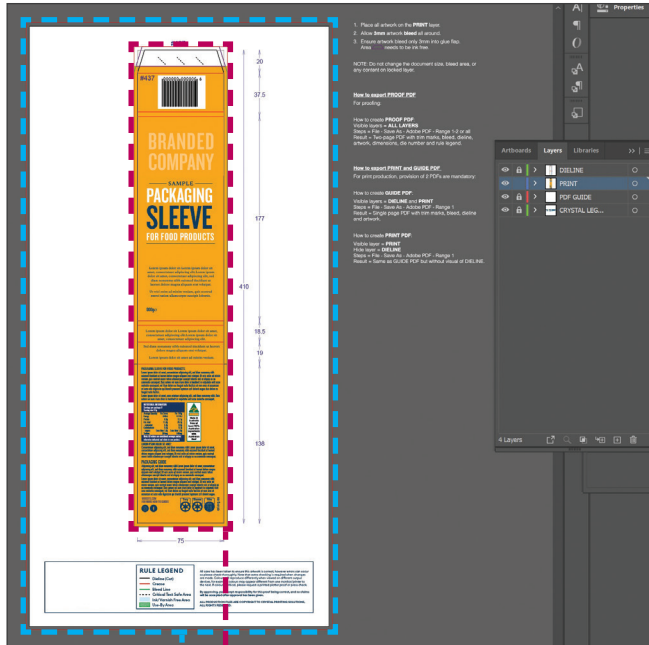
Ensure that the **Transparency** on the **Dieline Layer** is set to **Multiply**.



STEP THREE

Organise **DIELINE** and artwork design on separate layers. Place all design and artwork on **PRINT** layer. If your dieline has been supplied by us, you will receive an ai file containing **two Artboards**:

- **PRINT** which defines the finished size of your artwork
- **PROOF** which is oversized and includes dimensions and rule legends.

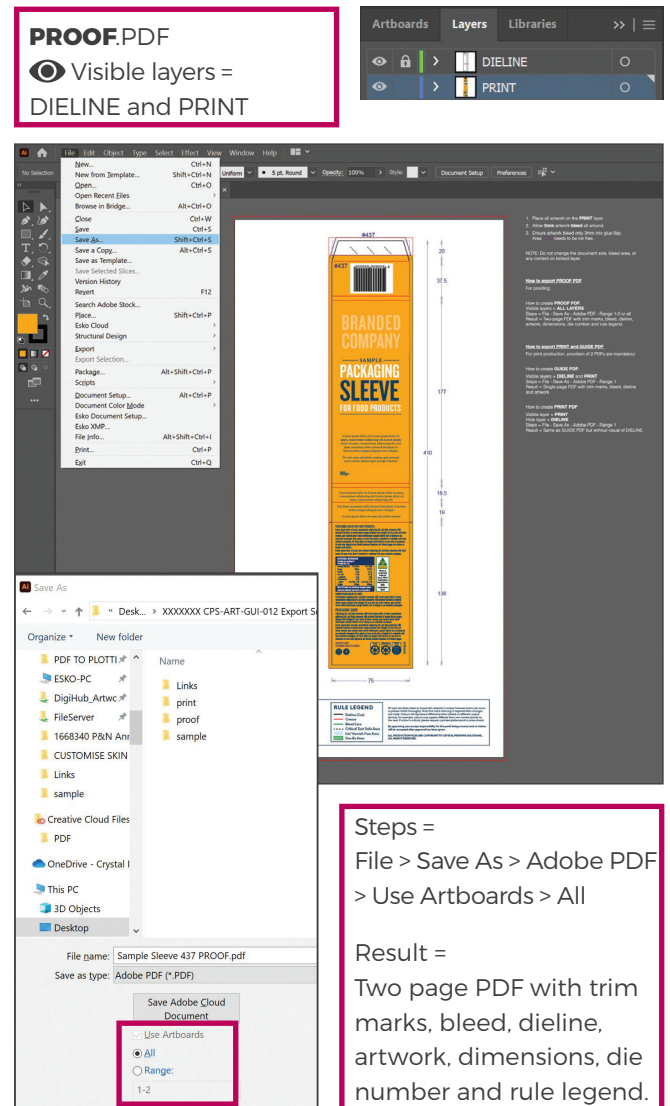


STEP FOUR

To prepare a **PROOF.PDF**, go to: FILE > **Save As**

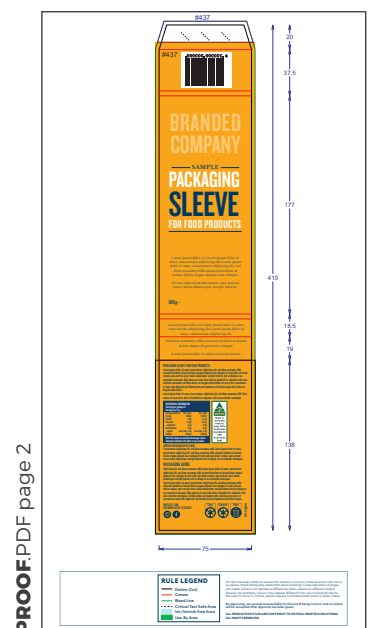
Select a location and ensure that file type is Adobe PDF.

Use **Artboard > All**



Steps =
File > Save As > Adobe PDF
> Use Artboards > All

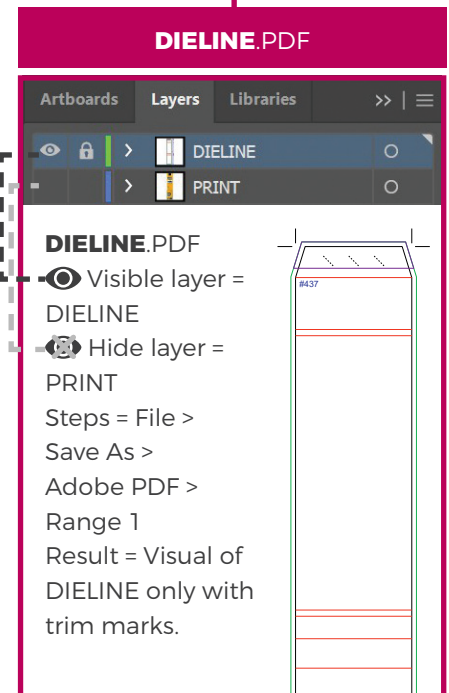
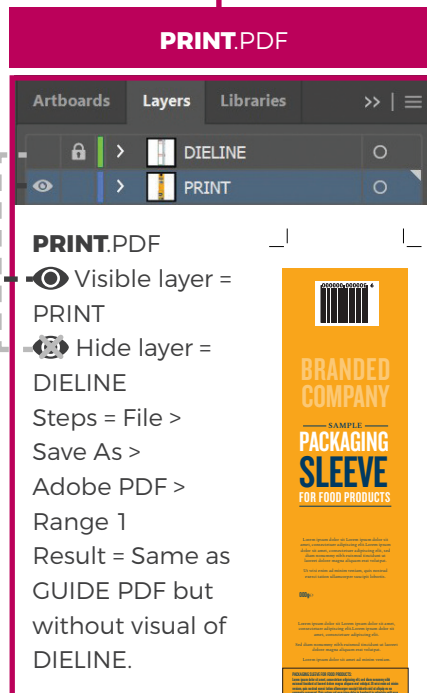
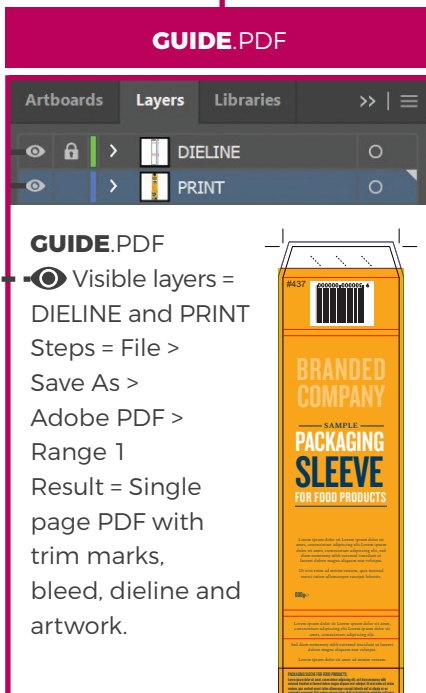
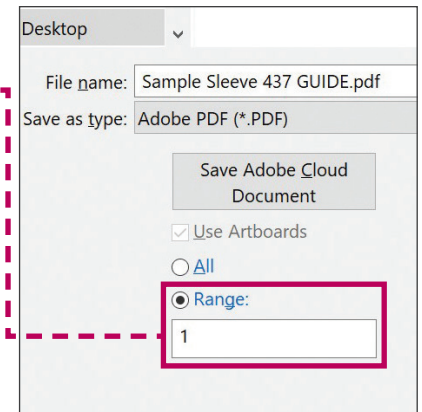
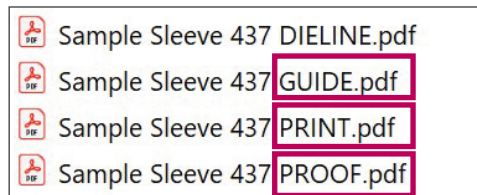
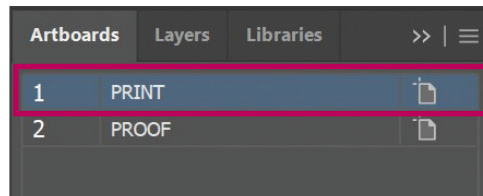
Result =
Two page PDF with trim marks, bleed, dieline, artwork, dimensions, die number and rule legend.



STEP FIVE

For print production, we require 3 PDFs of the **PRINT** artboard only.

Use **Artboard > Range 1**



STEP SIX

Ensure all fonts and images are available. Go to: **FILE > Save As**

Select a location and ensure that file type is Adobe PDF. Follow settings below.

